

|                          |                             |
|--------------------------|-----------------------------|
| Engine                   | Yanmar 3TNV88F-ESLY         |
| Net Power                | 21.2 kW (29 hp) @ 2,400 rpm |
| Maximum Digging Depth    | 3,085 mm                    |
| Standard Bucket Capacity | 0.11 m <sup>3</sup>         |
| Operating Weight         | 4,100 kg                    |

# 9035E EXCAVATOR



TOUGH WORLD. TOUGH EQUIPMENT.

# 9035E SPECIFICATIONS >>>

## ENGINE

|                     |                             |
|---------------------|-----------------------------|
| Emission Regulation | Stage IIIA                  |
| Make                | Yanmar                      |
| Model               | 3TNV88F-ESLY                |
| Net Power           | 21.2 kW (29 hp) @ 2,400 rpm |
| Peak Torque         | 106.8 N·m @ 1,500 rpm       |
| Number of Cylinders | 3                           |
| Displacement        | 1.6 L                       |

## TRACK DRIVE

|                      |           |
|----------------------|-----------|
| Maximum Travel Speed | 4.35 km/h |
| Drawbar Pull         | 33 kN     |

## UNDERCARRIAGE

|                                   |        |
|-----------------------------------|--------|
| Shoe Width                        | 600 mm |
| Number of Shoes per Side          | 45     |
| Number of Bottom Rollers per Side | 4      |
| Number of Upper Rollers per Side  | 2      |

## HYDRAULIC SYSTEM

|                       |          |
|-----------------------|----------|
| Main Pumps Total Flow | 95 L/min |
| Relief Pressure, main | 24.5 MPa |

## SWING SYSTEM

|             |         |
|-------------|---------|
| Swing Speed | 9.9 rpm |
|-------------|---------|

## REFERENCE ARM

|                              |          |
|------------------------------|----------|
| Arm Length                   | 1,320 mm |
| Arm Breakout Force, max, ISO | 20 kN    |

## WORKING RANGES

|                                    |          |
|------------------------------------|----------|
| Maximum Dig Depth                  | 3,085 mm |
| Reach at Ground Level              | 5,220 mm |
| Depth of 8' Level Bottom           | 2,610 mm |
| Maximum Dig Height                 | 4,710 mm |
| Dump Height                        | 3,310 mm |
| Maximum Dig Depth of Vertical Wall | 2,366 mm |

## BUCKET PERFORMANCE

|  |                     |
|--|---------------------|
| Standard Bucket Heaped Capacity ( Referenced ) | 0.11 m <sup>3</sup> |
| Minimum Heaped Capacity of Bucket Options      | 0.06 m <sup>3</sup> |
| Maximum Heaped Capacity of Bucket Options      | 0.11 m <sup>3</sup> |
| Bucket Breakout Force, max, ISO                | 30 kN               |

## SERVICE CAPACITIES

|                     |      |
|---------------------|------|
| Fuel Tank           | 40 L |
| Engine Oil          | 7 L  |
| Cooling System      | 7 L  |
| Hydraulic Reservoir | 58 L |

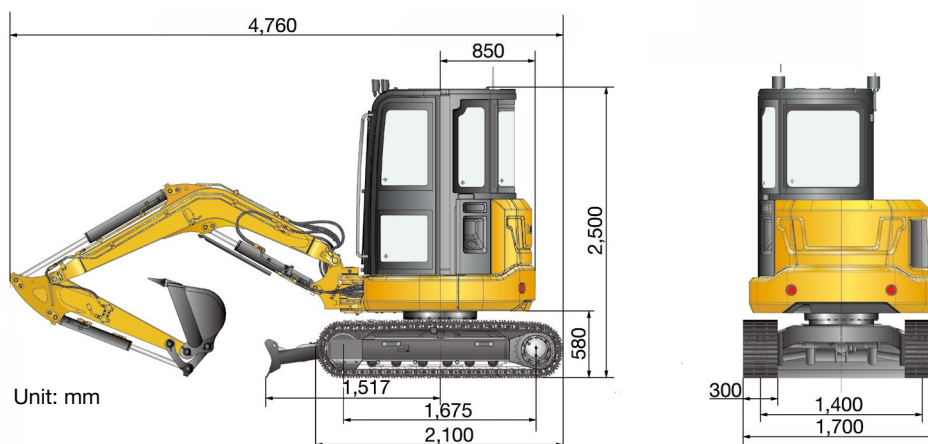
Bucket: SAE 0.11 m<sup>3</sup>, Boom: 2,450 mm, Arm: 1,320 mm, Shoes: 300 mm

| Lift Point Height |            |        |            |        |             |        | Max. Reach |        |         |       |
|-------------------|------------|--------|------------|--------|-------------|--------|------------|--------|---------|-------|
|                   | 2 m (6.6') |        | 3 m (9.8') |        | 4 m (13.1') |        | Front      | Side   | mm / ft |       |
| 3 m               | kg         |        |            |        | ※650        | 490    | ※660       | 450    | 4,198   |       |
| 9.8'              | lbs        |        |            |        | ※1,433      | 1,080  | ※1,455     | 992    | 13.8'   |       |
| 2 m               | kg         |        | ※840       | 780    | ※700        | 480    | ※670       | 370    | 4,620   |       |
| 6.6'              | lbs        |        | ※1,852     | 1,720  | ※1,543      | 1,058  | ※1,477     | 816    | 15.2'   |       |
| 1 m               | kg         |        | ※1,200     | 720    | ※820        | 460    | ※690       | 340    | 4,747   |       |
| 3.3'              | lbs        |        | ※2,646     | 1,587  | ※1,808      | 1,014  | ※1,521     | 750    | 15.6'   |       |
| 0                 | kg         | ※1,730 | 1,270      | ※1,390 | 680         | ※900   | 440        | ※720   | 340     | 4,607 |
| 0                 | lbs        | ※3,814 | 2,800      | ※3,064 | 1,499       | ※1,984 | 970        | ※1,587 | 750     | 15.1' |
| -1 m              | kg         | ※2,400 | 1,290      | ※1,330 | 670         | ※830   | 440        | ※750   | 410     | 4,167 |
| -3.3'             | lbs        | ※5,291 | 2,844      | ※2,932 | 1,477       | ※1,830 | 970        | ※1,653 | 904     | 13.7' |

1. ※ Indicates the load is limited by hydraulic capacity rather than tipping capacity.

2. The above rated loads are in compliance with ISO 10567 hydraulic excavator lift capacity rating standard. They do not exceed 87% of hydraulic lifting capacity or 75% tipping load.

3. Ratings at bucket lift hook.



Unit: mm

## Guangxi Liugong Machinery Co., Ltd.

No. 1 Liutai Road, Liuzhou, Guangxi 545007, PR China  
T: +86 772 3886124 E: overseas@liugong.com  
www.liugong.com

Specifications and designs are subject to change without notice. Machines shown may include optional equipment.

05/2016 Designed by LiuGong